



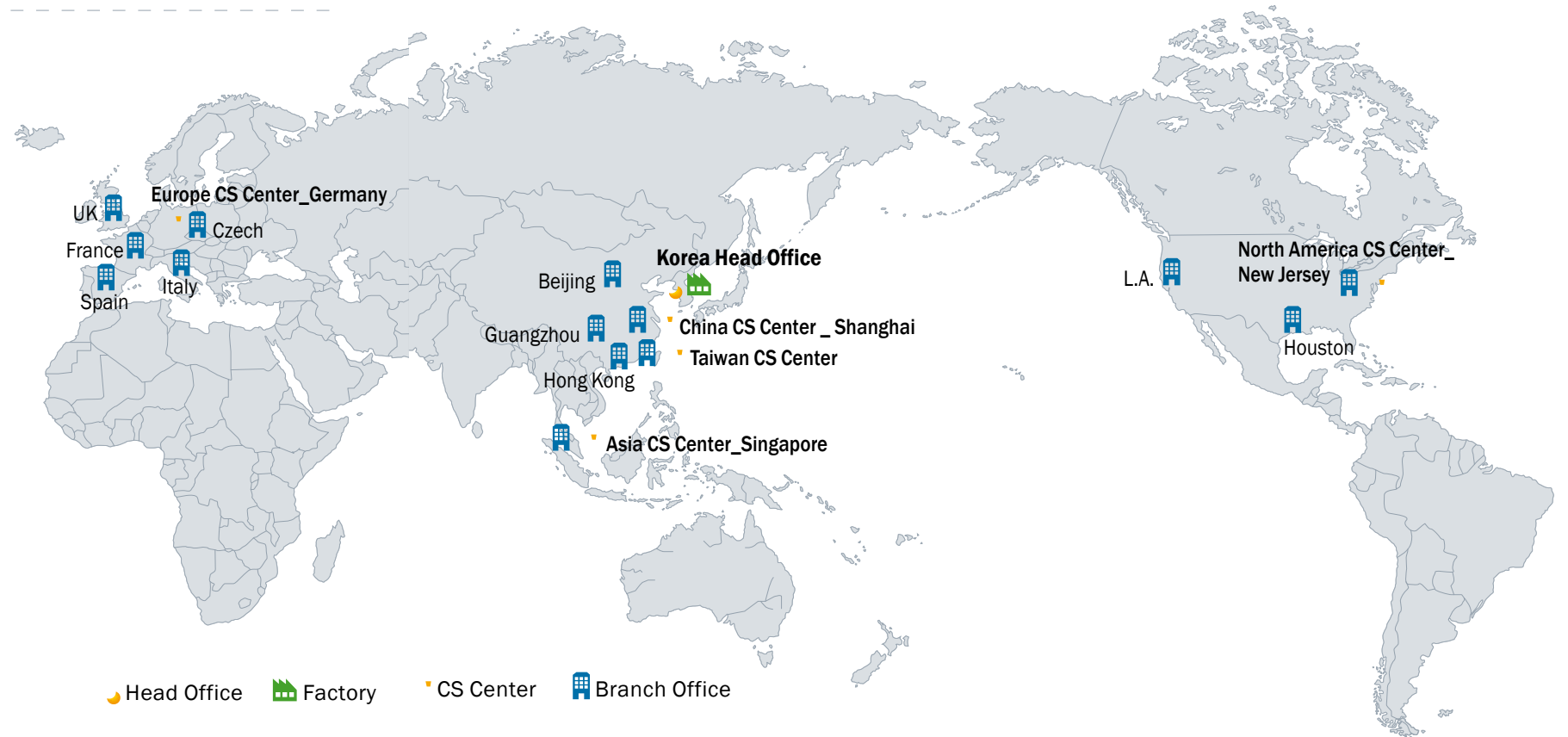
NEW
PaX-Flex3D

The convenient flexibility

The convenient flexibility



World Wide Network



In 11 nations around the world, VATECH & E-WOO is now receiving praise from customers as a world's No.1 digital radiography & CT. We will continue to provide differentiated value to our customers, thereby spreading VATECH & E-WOO's love across the globe

Head Office		Republic of Korea
Factory		Republic of Korea(Hwaseong)
CS Center		Europe_Germany / Asia_Singapore, Taiwan, Shanghai / North America_New Jersey
Branch Office		Europe_UK, France, Spain, Czech, Italy / Asia_China Beijing, China Shanghai, China Guangzhou, Hong Kong, Taiwan, Singapore / North America_L.A., New Jersey, Houston
Dealers		Europe_Belgium, Bulgaria, Croatia, Cyprus, France, Germany, Greece, Hungary, Italy, Netherlands, Poland, Portugal, Romania, Russia, Slovenia, Spain, Switzerland, Sweden, Ukraine / Asia_Bangladesh, Hong Kong, India, Japan, Nepal, Pakistan, Philippines, Sri Lanka, Thailand, Turkey, Vietnam / South America_Argentina, Bolivia, Brazil, Chile, Colombia, Nicaragua, Paraguay, Peru, Venezuela / North America_Canada, Mexico / Oceania_Australia, New Zealand / Africa_Egypt, Morocco, Libya, South Africa / Middle East_Iran, Iraq, Jordan, Kuwait, Lebanon, Saudi Arabia, Syria, Qatar, U.A.E, Yemen, Israel

We care for our customers
We care for the patients
We care for our partners
With insight, *Caring Insight*



World's Best Dental Imaging Company

VATECH & E-WOO, the digital imaging world leader announces all new CI. Based on cutting-edge technologies and comprehensive quality control, love and devotion from the fundamentals of medical and dental are added in to express sincere caring and empirical insight.

The VATECH & E-WOO's philosophy is embedded in the TRI-circle of light; the three circles represent passion, specialty and, innovation respectively. They are the three pillars of how we conduct our business.

Caring Insight VATECH

Caring Insight | VATECH

PaX-Flex3D _ CT Up-grade at anytime

PaX-Flex3D is easy to do up-grade from 5X5 to 8X5 by only changing a sensor.
Comprehensive flexibility of PaX-Flex3D offers dentists various selectable CT machines.



Begin successfully
with PaX-Flex3D.
It's solution.

Flexible solution in digital radiography



Simple solution to upgrade

When customers want to change their current FOV size to a larger FOV size they usually need to buy a separate machine to satisfy their requirement. VATECH offers you total solutions for your upgrade. Customers now can add additional larger FOV sensors for their imaging needs.

For dentists who are expanding their scope in dentistry, VATECH offers state of the art technology & flexibility, like easy Upgrade from Pano to CT(3 in1),CT viewer and orthodontic analysis software as well as CT viewing Software. Intra-oral sensors are also offered depending on patients requirements. At VATECH we make our products with the strictest protocol as well as giving you ergonomics and modern technology combined. Additionally VATECH's products are ergonomic and modern for a convenience of customers.

FOV size(5X5) is standard of small FOV size

Our standard FOV of 5X5 is capable of checking the occlusal surface up to periodontal ligaments located in the upper or lower jaw. By changing the sensors we can upgrade to panorama or CT.

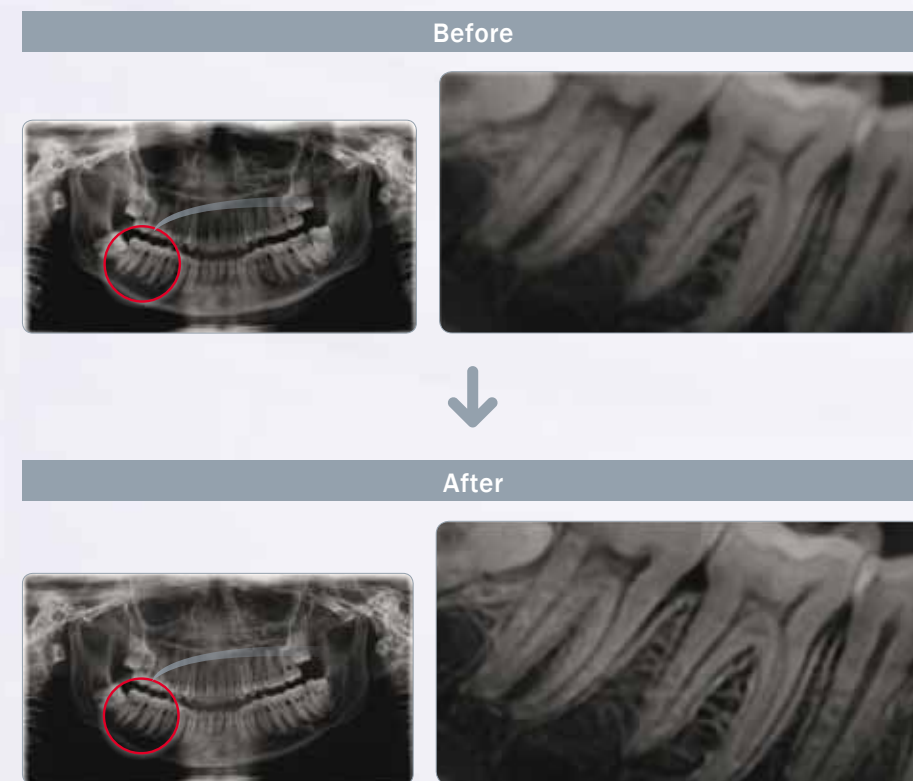
With reasonable price, VATECH ensures convenience in your treatment. The FOV 8X5 is suitable for multiple implant treatment and larger diagnostic area such as endodontic treatment.



PaX-Flex3D _ The Perfect Panoramic Image

UD(Ultra High Definition) Panoramic Image

With VATECH's new innovative UD technology we offer you more enhanced features and advantages. With its unique 5.2lp/mm compared with the 2.5lp/mm guideline of DIN for panoramic image, clearly PaX-Flex3D provides more superior and higher quality image. (Option)



Clinical Importance UD Panoramic image, the newest technology from us, offers the exact image of caries without any distortion, especially in the lower area of enamel. Furthermore, you can precisely check the actual volume of pulp without magnification from the panoramic image. Also, after the implant surgery, it shows clear commissure of fixture as well as trabecular bone & Lamina Dura. Finally, it is possible to check the condition of alveolar bone

Technical Importance The special UD panoramic image of VATECH realizes more clear image with distinguished 5.2lp/mm. It has almost the equal quality with Intra oral sensor covering much more extended area of arch.

PaX-Flex3D offers high quality panoramic image with its market leading image processing technology. Our superior imaging quality let's you experience perfect image anytime, every time with PaX-Flex3D.



10.4"LCD touch Panel

Convenient GUI with LCD touch panel experience function for easy operation & manipulation (Option)

Economically Perfect Alternative Innovation

Ez3D Lite _ Simple & Easy 3D viewer

PaX-Flex3D offers alternative innovation which provides quality images without the high price.

3 in 1

PaX-Flex3D is designed for dentists who are novice in implant practice. It's easily Upgradable and simple to use. With its multiple FOV size (5x5/8x5) it's perfect for small and middle sized FOV requirements. Metallic design cues for a touch of ultra modern luxury.



Auto-Focusing Technology

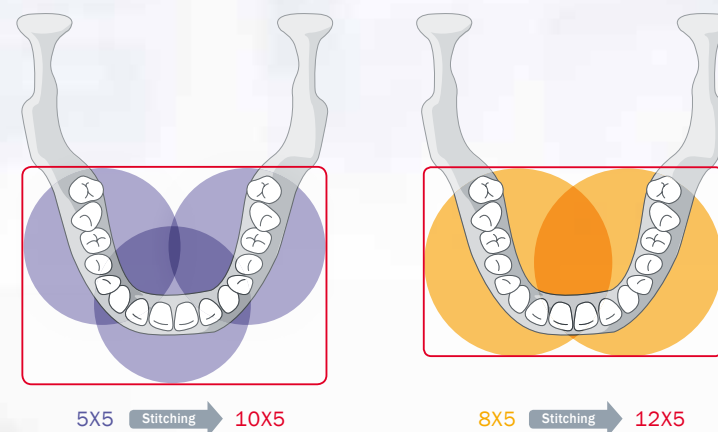
Auto-Focusing technology can select the optimized image automatically. Area sensor can take multiple images without concerning mal-positioning and untypical patient arch. Even if it cannot be used for the diagnosis, Auto-Focusing can revise original images automatically. (Option)



Stitching program

Stitching program shows user wide image by merging two or three localized volumes automatically. To obtain wide 3D acquisition, users can operate the stitching program without any upgrade to the CT machine. It's very useful in multiple implant treatment cases.

General	Stitching
5X5, 3 volumes	10X5
8X5, 2 volumes(option)	12X5



Customized Software

It's an economical tomography viewer for small FOV images that ensures accurate diagnosis and simulation fit for single or short span implant procedures.

Simple, easy, user friendly

Customize your toolbar

Ez3D Lite lets you customize your toolbar. With the ability to hide functions that you don't need and let's you add functions that you use all the time by making your toolbar less cluttered and complicated.

Implant simulation

Implant simulation let you simulate different scenarios and positions possible when doing implant surgery, with this function we can reduce the risk during actual surgery.

Canal draw

Accurately traces your mandibular canal which lessens injury to your mandibular canal during surgical procedure.



MPR Mode



Canal draw and Implant simulation

Dental Sherpa _ Practical 2D viewer tool for the modern dental clinic

- Real Digital Clinic / Advanced network management system / Clinic status monitoring system
- Advanced convenience / Intuitive user experience
- User friendly UI / Various Multilingual support
- Powerful function / 3D graph drawing function for statistics / Real time image processing / True type font supported
- Various counsel option / Implant simulation / Crown simulation / Whitening simulation

* Dental Sherpa is for UD Panoramic images and AF panoramic images(option)

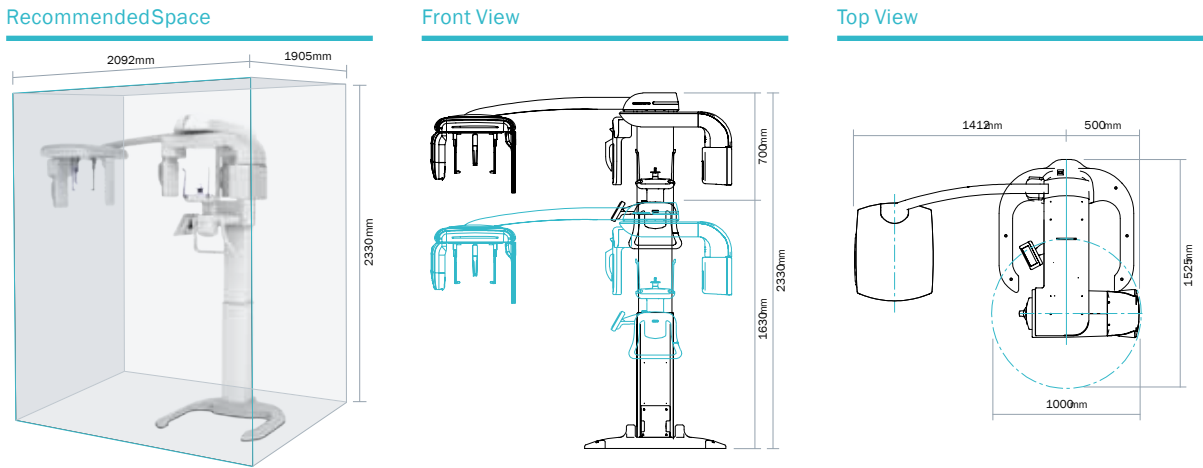
-> EasyDent is provided for basic Panoramic images.



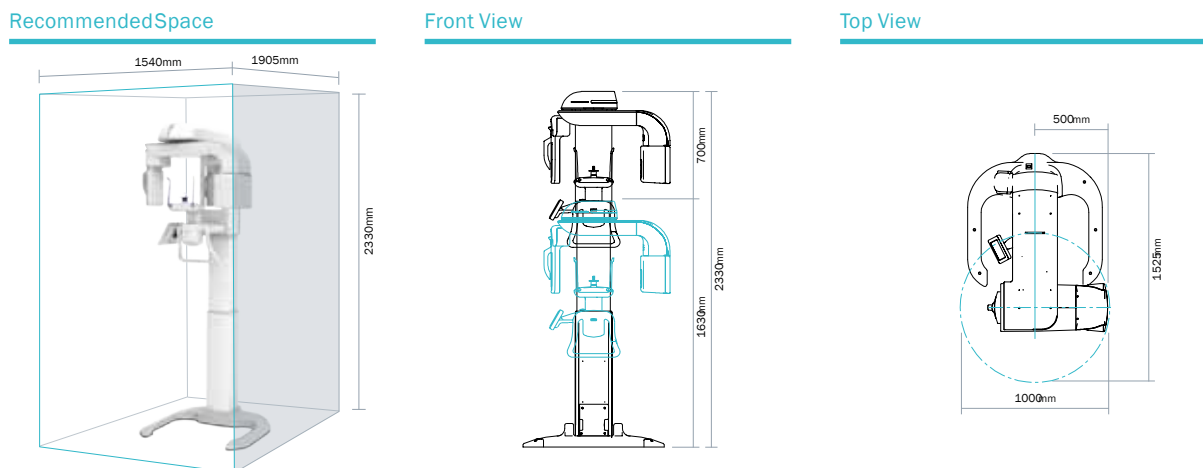
Which is the best PaX-Flex3D for me?

PaX-Flex3D _ Dimensions

PaX-Flex3D _ Pano / CT / Ceph



PaX-Flex3D _ Pano / CT



Specification

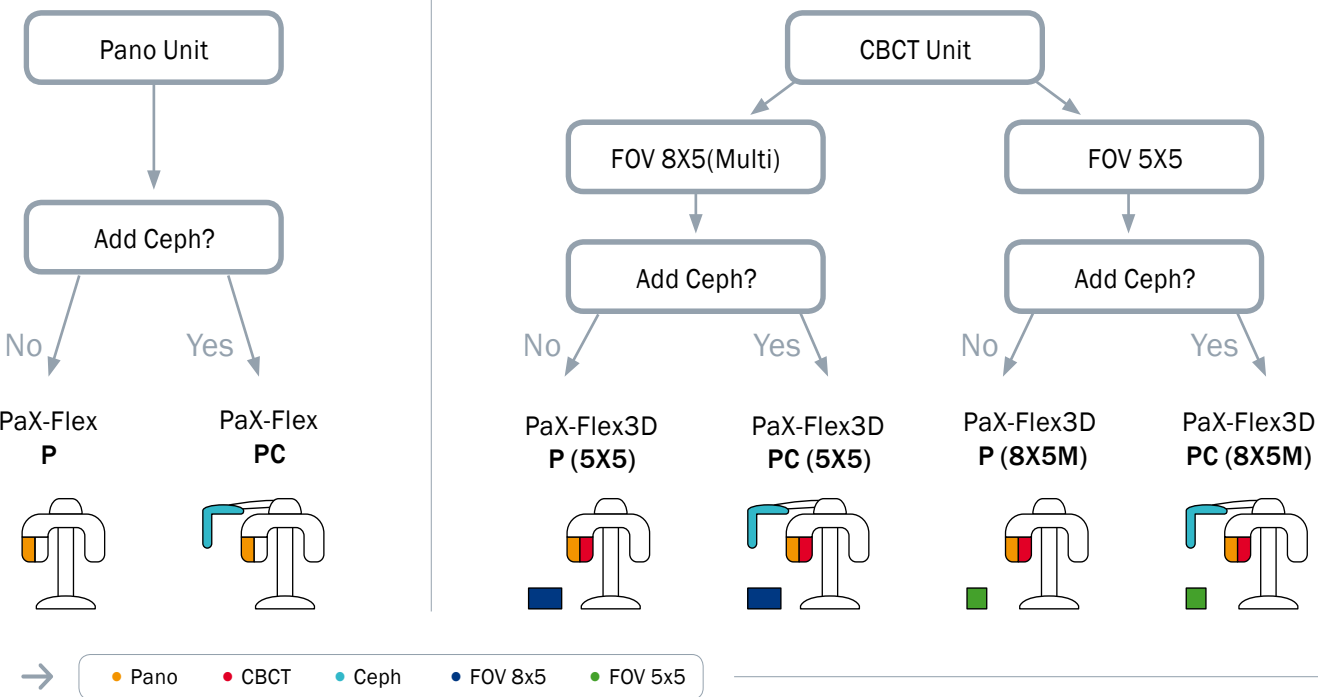
PaX-Flex3D	
Function	3 in 1 Panoramic, CBCT, Cephalometric
CBCT sensor	CMOS Sensor
FOV Size(cm)	- 5X5 (Single) / Stitching: 10X5 - 8X5 (Multi-5X5, 8X5) / Stitching: 12X5
Scan Time	CBCT: 24sec (FOV 5X5) / 24sec (FOV 8X5) Pano: 9.8/13.5/18sec (Fast/Normal/HD) Ceph: 12.5-13.5sec
Voxel Size	Standard: 0.2 / Application: 0.12
Recon Time	5-58sec
File Size	30MB (5X5/0.2voxel) 72.8MB (8X5/0.2voxel)
Rotating Angle	360°/240°
Generator Voltage / Current	CBCT: 50-90kVp / 2-10mA Pano: 50-75kVp / 2-9mA Ceph: 50-85kVp / 2-9mA
Focal Spot	0.5mm
Patient Position	Standing/Wheelchair accessible
LCD Touch Panel / Base	Option
Dimension (WxDxH mm)	1912X1525X2330 (Pano+Ceph) 1000X1525X2330 (Pano)

* The specifications are subject to change without prior notice.

Panoramic system

Up-grade

Including CBCT module



PaX-Flex3D Series - Product Configuration

Model	Pano	CBCT	Ceph	Upgradeable
PaX-Flex P	●	X	X	●
PaX-Flex PC	●	X	●	●
PaX-Flex3D P (5X5)	●	●	X	●
PaX-Flex3D PC (5X5)	●	●	●	●
PaX-Flex3D P (8X5M)	●	●	X	●
PaX-Flex3D PC (8X5M)	●	●	●	-

Upgradeable Module

The biggest advantage of PaX-Flex3D is that it can be upgraded.

Users don't have to invest in CBCT module or Ceph right away; it can be upgraded any time.